

**AFFORDABLE SAWING
STARTS WITH TIMBERY!**





**M100 with
4 kW Electric Motor**

M100

Simple – Compact – Convenient

Reach your sawing potential with a Timbery M100 personal sawmill. The M100 has a sleek design and all the great features of more expensive sawmills; including ceramic blade guides, quick-set log rests, and hand crank head adjustment.

The lightweight head and adjustable bed provide a variety of travel and storage options.

With a Timbery M100 you can do more and spend less.

M100 Sawmill Specifications	
Max. Cutting Length	3.55 m (standard bed)
Max. Log Diameter	660 mm (400 mm max for cutting through the centre)
Widest Board	550 mm
Power	4 kW Electric Motor 5.5 kW Electric Motor 9 HP Gas Engine 14 HP Gas Engine
Blade	1.00 mm x 32 mm x 3355 mm 1.07 mm x 32 mm x 3355 mm 9/29 or 10/30
Profile	
Water Lube System	Standard
Bandwheel	400 mm
Feed System	Manual Push
Bed Construction	Modular bolt together bed
Bed Extensions	1.52 m sections unlimited

M100 FEATURES



9 HP or 14 HP
Gas Engine



4 kW or 5.5 kW
Electric Motor



Sawyer has quick and easy access to: head up and down crank, blade guide arm, and blade control lever.



Quick-set log rests can be adjusted with one hand.



Adjustable blade guide arm with ceramic guides.



Quick-set log clamp.



Clamp Tip allows for a 25 mm last cut.



Simple shipping on a single pallet.

M100 ACCESSORIES



Cant Hook (option) is a traditional tool to roll, lift, move, and pivot logs. Available lengths of handle:

- 70 cm
- 120 cm

Gas Engine version – Easy-to-activate clutch and throttle lever.



Twin Blade Edger

The E100 twin-blade edger is designed to be an affordable solution for sawmillers to boost their productivity.

Two circular blades are provided standard, one is fixed, and the other adjustable. A removable board fence makes it easy to trim boards that already have one straight side. The E100 breaks down into a compact configuration for shipment.



E100 with 5.5 kW Electric Motor



5.5 kW electric motor (standard)
Sufficient power to process boards, but low overall power consumption to lower utility bills.



Two circular blades



Metric scale

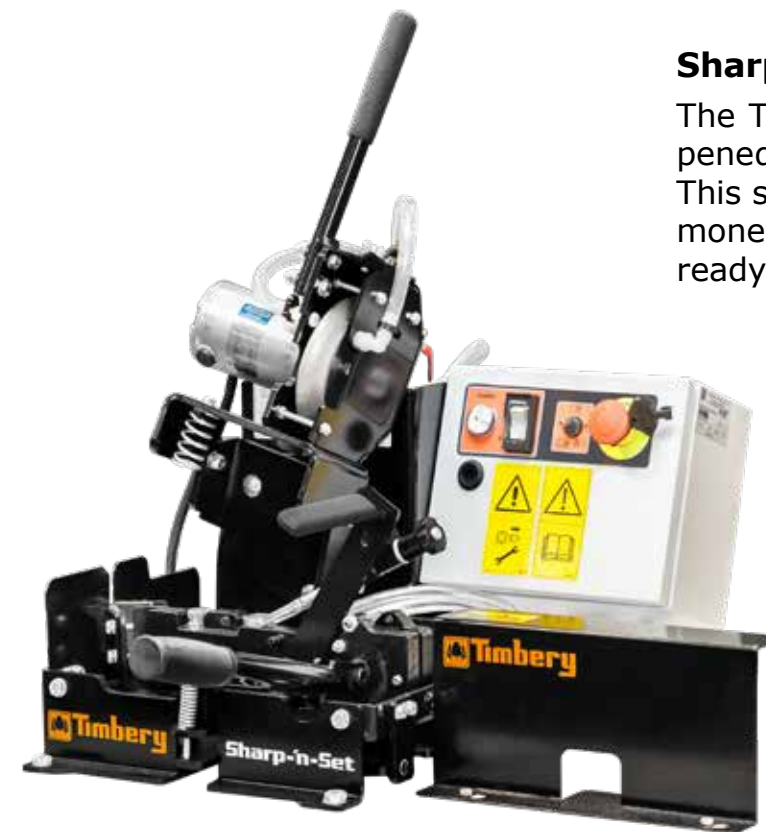


Manual blade adjustment
Easily and precisely adjust the distance between the blades to produce accurately-sized timber.



Hold-down rollers
Infeed and outfeed rollers keep the boards straight during edging.

E100 Edger Specifications	
Power	5.5 kW Electric Motor 7.5 kW Electric Motor 14 HP Gas Engine
Feed Speed	9 m/min
Circular Blade	250 mm
No. blades	2
Max. Feed Width	520 mm
Max. Cutting Width	300 mm
Min. Cutting Width	40 mm
Max. Cutting Thickness	50 mm



Sharpen and Set Blades All in One!

The Timbery Sharp'n Set provides a sharpened and set blade all in one machine. This simple and effective unit will save you money and provide a finished blade that is ready to saw.

It can handle 32 mm - 38 mm blades and has many adjustable features for precision and flexibility.

Sharp'n Set ACCESSORIES



CBN Grinding Wheel 127 mm (5")



Tooth set gauge

Grinding oil

Supported Blade Profiles

- 4°, 7°, 9°, 10° & 13°
- 22.2 mm (7/8") tooth spacing

Lubrication Features

- Oil pump
- Cleaning magnets

Blade Cleaning Features

- Oil wiper pads

Adjustable Features

- Adjustable tooth pusher for fine tuning sharpening
- Adjustable blade position for various widths
- Adjustable blade support brackets
- Adjustable set points

Sharp'n Set Specifications

Part Number	SNS20-100
Machine Size	41 cm x 51 cm x 32 cm
Machine Weight	37 kg
Power	115/230 V AC, 1 phase, 5.0/2.5 Amps, 50/60 Hz
Blade Capacity	32 mm - 38 mm
Controls	Manual
Wheel RPM	3700 - 0.14 HP (0.1 kW) 12 V DC



BLADES

Timbery blades are made with the same standards as our sawmills to be economical and deliver good performance.

We use a high quality, flexible steel, and then each tooth is induction hardened to stay sharp longer. The teeth are sharpened and pre-set with precise equipment ensuring the highest standards. Our blades can be used to cut soft wood, medium-hard wood and even harder species of wood.

Whether you are a Timbery sawmill owner or just need blades for your bandsaw, Timbery blades will give you the performance and affordability you need for profitable sawmilling.

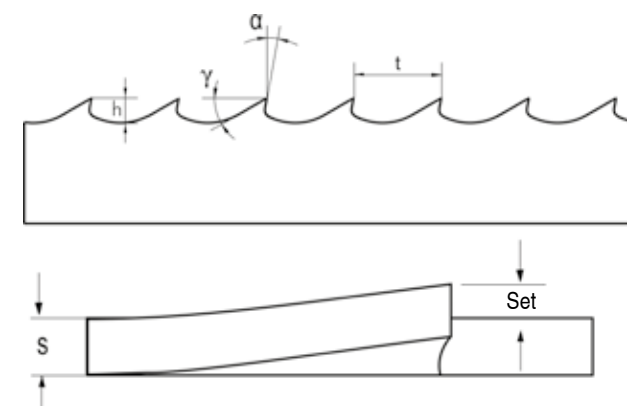
Item	Thickness x Width	Profile
BTR9735IH	0.90 mm x 35 mm	9/29, 10/30
BTR1732IH	1.00 mm x 32 mm	9/29, 10/30
BTR1735IH	1.00 mm x 35 mm	9/29, 10/30
BTR1740IH	1.00 mm x 40 mm	9/29, 10/30
BTR2732IH	1.07 mm x 32 mm	9/29, 10/30
BTR2735IH	1.07 mm x 35 mm	9/29, 10/30
BTR3732IH	1.14 mm x 32 mm	9/29, 10/30
BTR3738IH	1.14 mm x 38 mm	9/29, 10/30



Blades can be ordered in any custom length. All blades are available in square or flat boxes.



BLADES PARAMETERS



α – Hook Angle
 h – Tooth Height (Depth of Gullet)
 γ – Back Angle
 t – Tooth spacing
 s – Thickness of blade
 α/γ = tooth profile

Tooth profiles available for Timbery blades:

- 9/29 recommended for harder wood
- 10/30 recommended for general purpose sawing, softwoods or easy-to-saw hardwoods

How to read the blade part number.

B = BOX OF BLADES	B
TR = TIMBERLY BLADES	TR
Thickness: 9 = 0.90 mm 1 = 1.00 mm 2 = 1.07 mm 3 = 1.14 mm	2
Tooth spacing: 7 = 22.2 mm	7
Width: 32 = 32 mm 35 = 35 mm 38 = 38 mm 40 = 40 mm	32
Details of teeth: IH = INDUCTION HARDENED	IH
Details of profile: 0929 = TOOTH PROFILE 9°/29° 1030 = TOOTH PROFILE 10°/30°	1030
Length: LENGTH IN CENTIMETERS	-336
Type of box and quantity of blades: F = FLAT BOX S = SQUARE BOX 05 = 5 PCS PER BOX 08 = 8 PCS PER BOX 10 = 10 PCS PER BOX 15 = 15 PCS PER BOX	-F10



AFFORDABLE SAWING STARTS WITH TIMBERLY

We know the purchase of a sawmill, or similar equipment, is a significant investment for many. With several brands out there, just a few separate themselves from the rest. At TIMBERLY, our mission is to provide quality, easy to operate and maintain products at unbeatable prices.

Before you make your investment, we suggest comparing our products with the competition. Look beyond the promotional brochures and videos and try the machines yourself. Call a local dealer for a demonstration or look for us at a show.

Combining 30+ years of experience in building industrial and portable sawmills, Timberly engineering set out to fill a growing need for a sawmill that would:

- Be less expensive but cut just as well or better
- Include features and innovations not available anywhere else.

When you choose Timberly, that experience and innovation translates to higher quality, a clean design, and simple sawing performance every time.

Riko UK Ltd

South East (Head Office).

Inverallen Yard, Forge Road,
Kingsley, Hampshire
GU35 9LW
Tel: 01420 487300

North East.

Unit 10, Spruce & Hawe yard,
Blind Lane, Near Tockwith,
YO26 7QJ
Tel: 01423 359419

South Wales.

Mountain View, Cold Blow,
Narberth, Pembrokeshire,
SA67 8RR
Tel: 01834 861523

North Wales.

Nant Mostyn, Cyffylliog,
Ruthin, Denbighshire,
LL25 2 DP
Tel: 01824 538638

Email: enquiries@riko-uk.com

www.timbery.co.uk

www.riko-uk.com